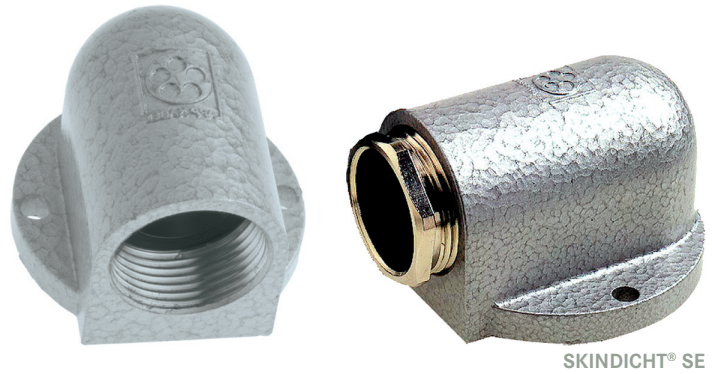


SKINDICHT® SE



SKINDICHT® SE

Benefits

- Sealed by incised sealing ring
- Corrosion resistant
- Easy to assemble/install
- Completely safe cable entry
- Low overall height

Application range

- Where high mechanical stress is given
- Everywhere where no connection thread is given

Approvals (Norm references)



Design

- PG 16 - 21 with 2 screw holes
- PG 29 - 36 with 4 screw holes

Note

- For combination with other SKINDICHT® or SKINTOP® cable glands, we propose our SKINDICHT® SE without incised sealing ring and compression screw

Technical data

Material
 Body: Cast zinc, grey, hammertone enamelled
 Incised sealing ring: CR
 O-ring: NBR
 Compression screw: Nickel plated brass

Degree of protection
 IP 55

Range of temperature
 -20°C up to +80°C

Part number	Part designation / size	Incised sealing ring ØF, mm	SW mm	Overall length in mm	Overall width mm	Overall height mm	Pieces / PU
SKINDICHT® SE							
52004130	SE 16	8 / 10,5 / 13,5 / 16	22	49.2	42	36.0	10
52004140	SE 21	11 / 15 / 18 / 20	28	68.1	60	52.5	10
52005430	SE 29	19 / 23 / 27 / 31	37	83.6	66	54.0	5
52004150	SE 36	25 / 28 / 31 / 35	47	99.6	85	73.0	1
SKINDICHT® SE without E+D							
52024090	SE 16			42.0	42	36.0	10
52024100	SE 21			60.0	60	52.5	10
52024110	SE 29			76.0	66	54.0	5
52024120	SE 36			90.0	85	73.0	1